



The Pillow Cover Envelope

This method is a great way to cover a decorator pillow neatly without the fuss of zippers or other fasteners.

Complete the front of the decorator pillow according to the directions.

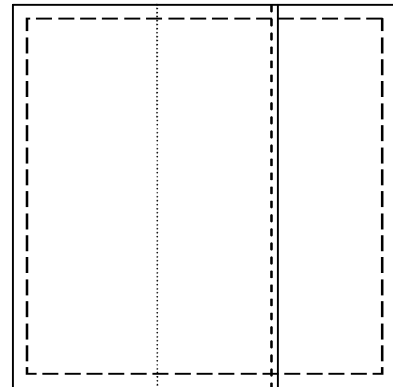
The back of the pillow cover is made up of 2 overlapping pieces of unquilted fabric. Use the chart to cut the pieces to the correct size.

Pillow size	Backing pieces – cut 2
12" square	12" x 9"
14" square	14" x 10"
16" square	16" x 11"
18" square	18" x 12"

If the size of your pillow is not on the chart use this rule to calculate the size of the backing pieces. Divide the *width* of the pillow in half, then add 3". This is the width of each backing piece. The *height* is the same as the pillow front.

Hem one side of each backing piece with a $\frac{1}{4}$ " hem. (Fold the edge over $\frac{1}{4}$ " and press. Then fold it over again, press and stitch down.) If the fabric is directional, ensure that you have hemmed the right side of one backing piece and the left side of the other backing piece.

Place the front of the pillow cover face up on your work surface. With right sides together, **lay** the first backing piece onto the pillow cover front, matching the raw edges on 3 sides. **Pin** along the edges. With right side down, **lay** the other backing piece on, matching the raw edges to the front cover on 3 sides. **Pin** along the edges.



Stitch together $\frac{1}{4}$ " from edge on all 4 sides.

Press and turn right side out.

Stuff the pillow form in through the opening at the back and smooth the flaps down to cover it.

Your pillow cover is done!

Toss it onto your sofa or bed, step back and appreciate how great your work looks!